



# GAT MONTHLY MEMBERSHIP PROGRESS REPORT

Results as of: 6/30/2024

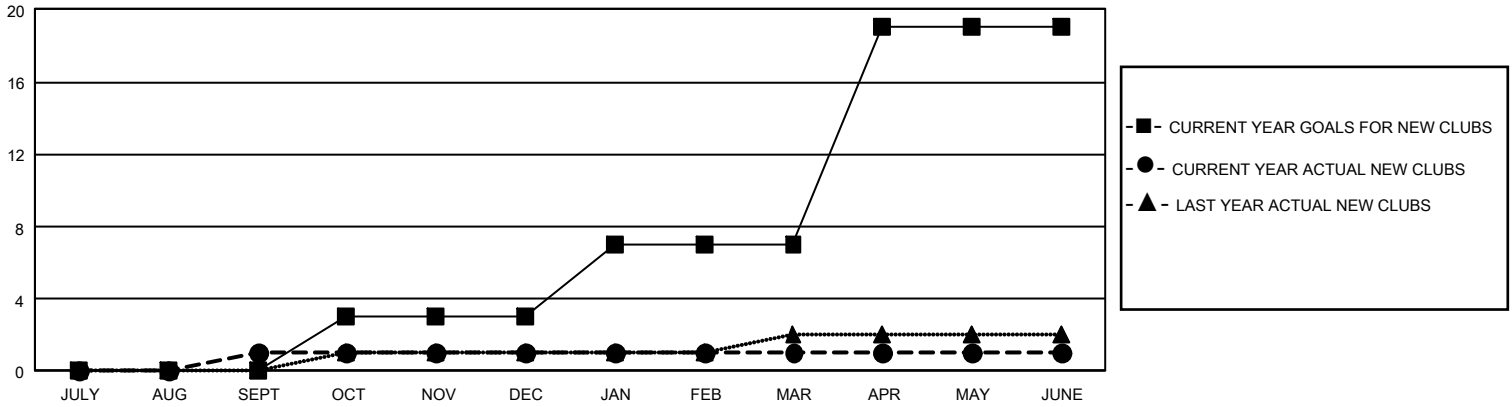
## GMT Constitutional Area 4, Group A

REPORT DOES NOT INCLUDE CLUBS IN UNDISTRICTED AREAS.

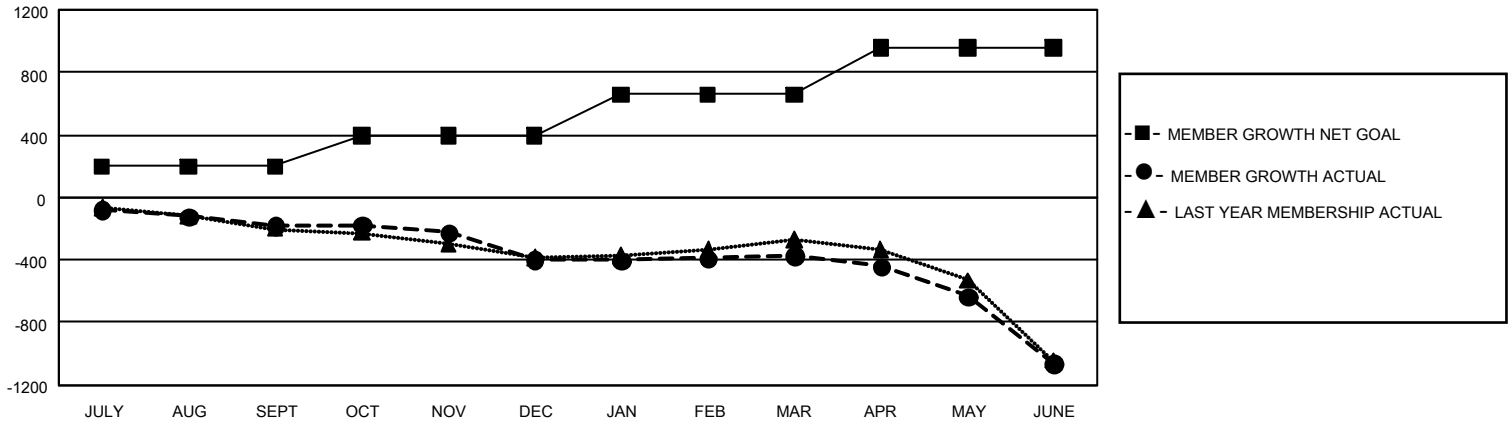
Clubs			
RESULTS FOR 2023-2024			
QUARTER	NEW CLUB GOAL	NEW CLUBS	DROPPED CLUBS
JULY/AUG/SEPT	0	1	9
OCT/NOV/DEC	9	0	3
JAN/FEB/MAR	12	0	3
APR/MAY/JUNE	36	0	19

Members			
RESULTS FOR 2023-2024			
QUARTER	MEMBER GROWTH NET GOAL	MEMBER GROWTH ACTUAL	DROPPED MEMBERS ACTUAL (including transfers)
JULY/AUG/SEPT	198	195	355
OCT/NOV/DEC	199	302	490
JAN/FEB/MAR	262	340	292
APR/MAY/JUNE	300	283	919

GOALS AND ACTUAL NEW CLUBS CUMULATIVE



GOALS AND ACTUAL MEMBERS CUMULATIVE



DROPPED CLUBS: 34	448 CLUBS OF 953 ADDED 1 OR MORE NEW MEMBERS	<u>GENDER DISTRIBUTION</u>	
		MALE	14,849 (75.29%)
<u>DROPPED MEMBERS</u>		FEMALE	4,871 (24.70%)
DECEASED	241	NON BINARY	0 (0.00%)
CLUB CANCELLED	29	PREFER NOT TO ANSWER	2 (0.01%)
OTHER	1,786	TOTAL FAMILY UNIT MEMBERS	644
<b>TOTAL</b>	<b>2,056</b>	FAMILY MEMBERS PAYING HALF DUES	324

[CLICK HERE FOR CUMULATIVE MEMBERSHIP DATA](#)